

# Product Newsletter

VOLUME 1, ISSUE 2

JANUARY 2012



## Cable Duct Sealing

### A brief look at our growing portfolio:

- *Mass Notification Solutions.*
- *Cable Duct Sealing*
- *Next generation flood protection products.*
- *Emergency Products*
- *Concrete Shelters*
- *Broadest property level solution portfolio*
- *nanoShell Stone*

### Inside this issue:

Mass Notification Solutions	<b>1</b>
Flood Maps and Risk Assessments	<b>2</b>
Heritage Property Flood Solutions	<b>3</b>
More door barriers & air brick covers	<b>4</b>
DIY Flood Protection	<b>5</b>
NanoShell Stone	<b>6</b>
Dragonboard	<b>7</b>

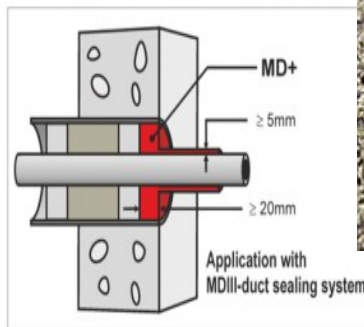
We offer a range of duct sealing solutions to cater for all types of ducts and applications.

**MD11** – This system can only be used if the duct is finished flush with the wall. The reason for this is because it actually seals around the outside edge of the duct as well as inside.

**MD111** – This system is defiantly the most popular as it can be used on any duct or bore hole. Doesn't matter how many cable are in the duct or whether the duct finishes flush with the wall.

**MD1V** – This system is used to seal an empty duct. – Easy to remove. Just drill 4 holes and use a plaster board knife to Cut it out.

**MD+** Fire Sealant. (shown below)



This is used when you need to make our seal fire proof up to 90 minutes in accordance with BS EN 1366-3:2009.

**These products can be supplied as supply only or with our installation service.**

**Gas and water tight solutions that can also be made fire proof.**



## New Flusher applications

During trials at several water companies a few new areas where Flusher can be deployed have been identified.

1. To extend a pumped section.
2. To improve flows from low flush toilets.
3. To improve flows through undulating pipes

4. As well as its main purpose of reducing FOG build up and preventing the conditions for it occurring this action is also good for getting rid of rodents.
5. Replaces Jetting and Rodding.
6. Moving silt to an

easier access point.



## Mass Notification Solutions

Flash flooding by its very nature is upon us in an instant and gives very little warning of the impending flood waters that are about to descend on our community.

If you live in a flood risk area you have probably signed up to FloodLine from the Environment Agency but is that enough?

Modern day warning sirens include tones and spoken word in both pre-recorded and ad hoc formats. A single siren strategically placed can warn an entire community instantly of a flood incident whether you are indoors or outside.

### Alert & Inform

6 powerful tones get instant attention

Optional visual alerts available too.

Messages provide pre-recorded and LIVE information about what to do.

Systems are surveyed and designed by our expert teams to ensure maximum coverage and penetration inside of buildings. Omni-directional or rotating sirens can provide 360° coverage up to a mile away.

The systems have independent power sources, can be operated remotely and give instant **LIVE** public address capabilities for the **emergency services**.



## Flood Maps and Risk Assessments

**FLOOD RISK SCREENING OF PROPERTIES IS INEXPENSIVE.**

**RESIDENTIAL £30.00**

**COMMERCIAL £85.00**

Our partners at Argyll Environmental provide a wide range of flood mapping solutions for residential and commercial properties to assess flood risk in England & Wales that are suitable for insurance risk assessment and deciding if a Flood Risk Assessment is required to satisfy the requirement of PPS25 where development is planned.

\* Includes risk and likely depth of surface water flooding, a major cause of flooding in urban areas.

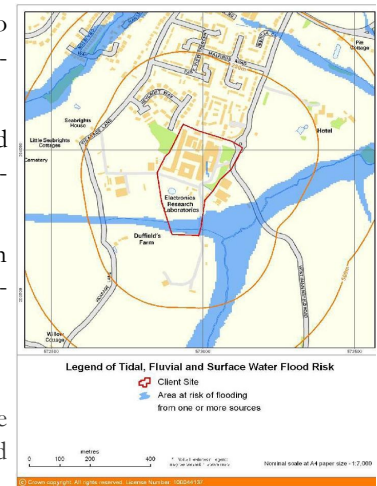
\* Clear single map to show whether the property is at risk of flooding.

\* Risk assessment and commentary by an experienced Argyll consultant.

\* Accurate site validation using the latest aerial photography

\* 250m search radius

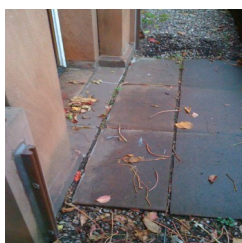
\* Advise and indicative pricing for flood resistance measures.



## Heritage Property Flood Solutions

We supply and fit a range of door & window covers and Smart airbricks that are suitable for Grade I & Grade II listed properties.

Those with back frames can be colour matched and set on stone, if required and are suitable for Grade II listed properties.



For Grade I properties we can use the type shown in white which only leave a few studs visible in the wall when not in use and proved a great hit with the

Royal Shakespeare Company in Stratford for their actor's cottages on the canal side.

The blue barrier shown is part of our DIY range and uses a simple



expanding sealing system to fit between the walls of your doorway. Because it is a simple compression fit it leaves no visible signs when not in use. For Smart airbricks please refer to our

DIY section



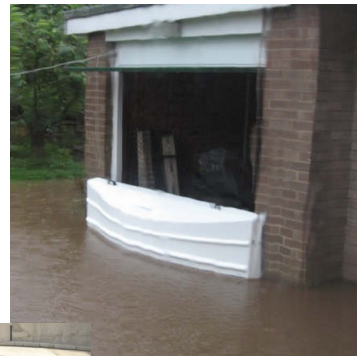
## Property Level Flood Protection—maximum choice

We now offer property level flood protection solutions from Floodguards, Flood Control, Floodtite. Floodgate, Caro, Infotec, Eco Coverage, MacLennan and Donite Plastics.

This range offers the best of all solutions and choices to the property owner. Each has its merits and we are able to offer the best fit for the job based on our knowledge and in conversation with the property owner. Where appropriate all products adhere to the BSI Kitemark



### A wet Floodguard



## DIY Flood Protection

We supply a wide range of products for those people who wish to protect their own properties at an affordable price.



**VISIT OUR NEW  
WEB SITE TO  
REVIEW THE  
COMPLETE  
RANGE OF DIY  
PRODUCTS WE  
SUPPLY**



## NanoShell—revolutionary water proofing solutions

### NanoShell Stone.



NanoShell Stone is a colourless water-repellent coating for masonry, natural stone & composite stone, based on UV and high pH resistant silicon nano particles. It achieves a highly durable protective coating offering

- ⇒ Waterproof coating up to 25 years
- ⇒ Prevents water damage, moulds, salts.
- ⇒ Prevents frost damage

- ⇒ Maintains original colour & texture
- ⇒ Increases insulation capabilities
- ⇒ Eliminates the need for cleaning

Once NanoShell Stone has cured the substrate will retain its original colour and texture but will now contain a powerful water repellent that is ideal for waterproofing outer walls skins that is guaranteed to give a water repellent surface for up to twenty five years.

## Revetment

7 The Coach Houses  
Henley-in-Arden  
Warks  
B95 5FN

Phone: +44 (0)844 8044 046  
Fax: +44 (0)845 833 0053  
E-mail: [enquiries@revetment.uk.com](mailto:enquiries@revetment.uk.com)



Flood Protection Specialists

WE'RE ON THE WEB AT  
[WWW.REVETMENT.UK.COM](http://WWW.REVETMENT.UK.COM)

Revetment is a specialist flood protection company offering a comprehensive range of solutions for critical infrastructure (gas, water, nuclear & electricity stations), government (hospitals, health centres, schools, surgeries, colleges, universities, prisons, police, fire & ambulance stations) heritage sites, commercial and residential properties.

Our range of products and services are enhanced by our partner channel to include Flood Risk Assessments, hydrology studies, surveys, internal tanking, temporary & demountable barriers and guards, flood alarms and gauges, flood risk maps & analysis, mass notification systems, breathable lime-based plaster and much more.

**A further look at the broad portfolio we are able to bring to market.**

## Dragonboard. An exclusive sales & marketing JV



Revetment has teamed up with Dragonboard to provide a complete suite of flood resistance and flood resilience solutions for all property types.

Dragonboard is a unique environmentally friendly product that can provide entire house construction solutions to Code 6 (Passivhaus) whilst also providing superior flood resilience properties.

With precision cut, jointing and sealing of boards on internal wall and floor surfaces and joints, the board effectively tanks the internal surfaces, rendering them both air and water tight. As such the board is ideal for use in buildings in FLOOD risk areas, by allowing

rapid recovery by pressure washing and cleaning. The surfaces dry out within days leaving them ready for new applied finishes.

It makes the perfect board for use in retrofits of houses already suffering from flooding. The textured face when exposed on external sheathing is ideal for the application of applied finishes, including all render systems.



A Dragonboard partition, comprising 12mm Dragonboard lining panels on lightweight steel frame, insulated with mineral wool, has achieved a **1 Hour Fire**

**Resistance Test in accordance with BS EN 1364-1:1999 Test Report No. 248065.** Dragonboard is completely **waterproof**, and will not disintegrate when immersed in water, or exposed to freeze/thaw cycles for prolonged periods of time, and does not swell. It provides superior moisture

resistance in high humidity areas and combats the growth of mildew and mould. Yet the whole time Dragonboard is breathable.